

Family History Research on the Semantic Web:

**Building a Semantic Prototype for Danish
Genealogical Research**

By
Charla Woodbury and David W. Embley

BYU Computer Science Department

charlajw@cs.byu.edu embley@cs.byu.edu

Family History Technology Institute

March 24, 2005

Supported in part by NSF

Semantic Web

Machine “Understandable” Web

MEANING

KNOWLEDGE

INFORMATION

DATA

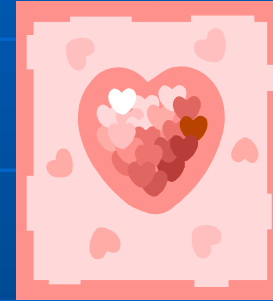
Need for Semantic Web

“The Semantic Web: ... content that is meaningful to computers [and that] will unleash a revolution of new possibilities ... Properly designed, the Semantic Web can assist the evolution of human knowledge ...”

(Tim Berners-Lee, ..., Weaving the Web)

Semantic Web

'DATE'



Calendar **date**

To date an artifact

A **fruit**

A romantic experience

To **go on a romantic experience** with someone

Also a SURNAME –
Mr. C. J. Date**

**The semantic web will make it possible
for machines to know the difference!**

**** Edgar F. Codd and C. J. Date are famous in
the area of databases for defining levels of
normal forms**

Real Problem



1. Peter ANDERSEN b. 1800 d. 1870 P. 1800-1870 P. 1800-1870 P. 1800-1870 P. 1800-1870	2. Peter PEDERSEN BACH b. 1800 d. 1870 P. 1800-1870 P. 1800-1870 P. 1800-1870 P. 1800-1870	3. Peter PEDERSEN BACH b. 1800 d. 1870 P. 1800-1870 P. 1800-1870 P. 1800-1870 P. 1800-1870	4. Peter PEDERSEN BACH b. 1800 d. 1870 P. 1800-1870 P. 1800-1870 P. 1800-1870 P. 1800-1870	5. Peter PEDERSEN BACH b. 1800 d. 1870 P. 1800-1870 P. 1800-1870 P. 1800-1870 P. 1800-1870	6. Peter PEDERSEN BACH b. 1800 d. 1870 P. 1800-1870 P. 1800-1870 P. 1800-1870 P. 1800-1870	7. Peter PEDERSEN BACH b. 1800 d. 1870 P. 1800-1870 P. 1800-1870 P. 1800-1870 P. 1800-1870	8. Peter PEDERSEN BACH b. 1800 d. 1870 P. 1800-1870 P. 1800-1870 P. 1800-1870 P. 1800-1870	9. Peter PEDERSEN BACH b. 1800 d. 1870 P. 1800-1870 P. 1800-1870 P. 1800-1870 P. 1800-1870	10. Peter PEDERSEN BACH b. 1800 d. 1870 P. 1800-1870 P. 1800-1870 P. 1800-1870 P. 1800-1870
--	---	---	---	---	---	---	---	---	--



A person decides to do family history research for the first time on their Danish family lines.

- Where do they go?
- What records do they look for?
- How do they handle records in Danish?
- How can they tell when the records they have match their search family?

Semantic Web

Ideal for Family History

SOLUTION – PROTOTYPE

- **The heart of a one-stop web site for naïve researchers**
- **So many records have been extracted into digitized forms and are often available on the Web**
- **Limited geographically – parish and probate records from Nim District, Skanderborg, Denmark**
 - [100% probates](#)
 - [100% marriages](#)

Semantic Web Prototype

Ontology – semantic model

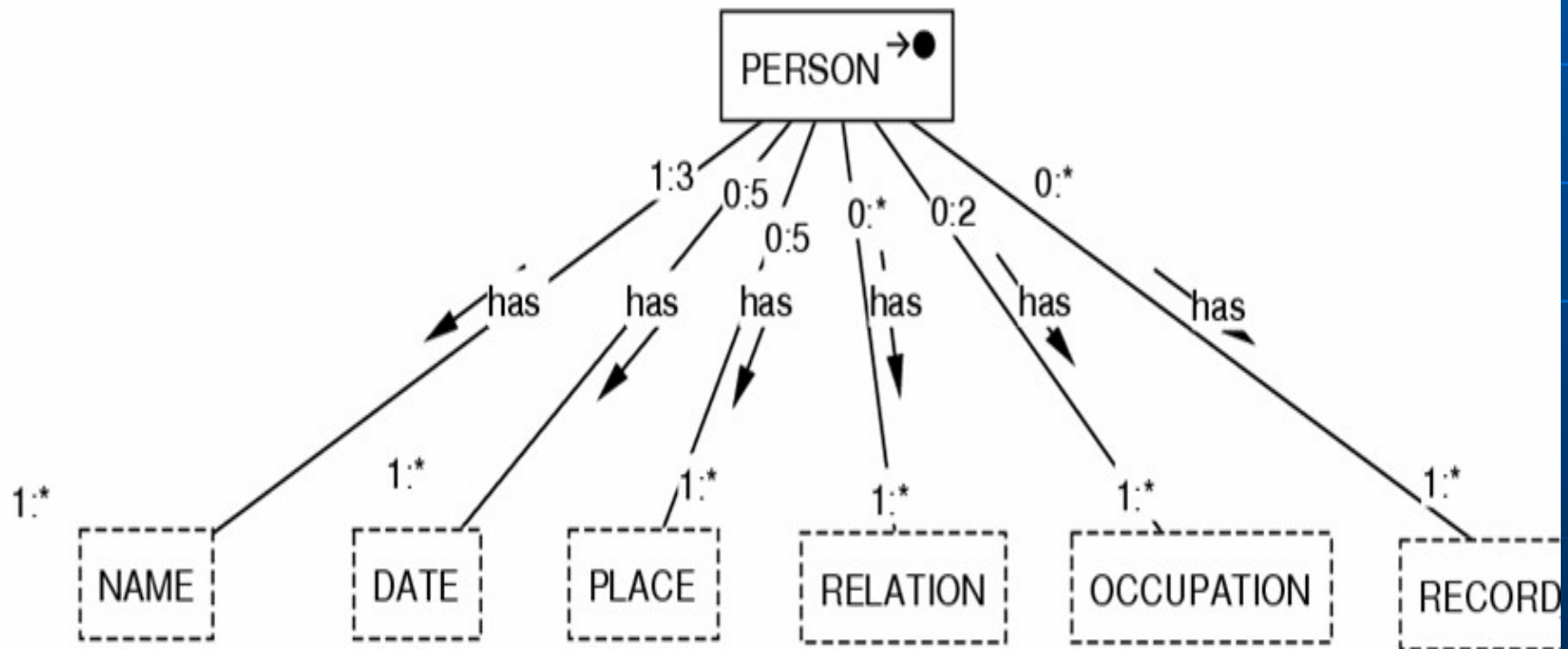
(BYU Ontos)

Annotated web pages

(Web Ontology Language OWL proposed W3C Feb 2004)

Solutions for special genealogical problems

Ontology Model



Person Matching in genealogical research

- **NAMES**
- **DATES**
- **PLACES**
- **RELATIONS**

Ontology Entities

FIND and MARK UP relevant web pages by:

- NAME <NAME>
- DATE <DATE>
- PLACE <PLACE>
- RELATIONSHIP <RELATION>
- OCCUPATION <OCCUPATION>
- RECORD_TYPE <RTYPE>
- SOURCE <SOURCE>

Partial Danish GIVEN NAME LEXICON

■ MALE

- And.
- Anders
- Andreas
- Christen
- Christian
- Eric
- Erik
- Gregers
- Hans
- Ib
- Jacob
- Jens
- Jep

■ FEMALE

- Ane
- Anna
- Anne
- Birthe
- Birte
- Bodil
- Caroline
- Dorte
- Dorthe
- Elene
- Ellen
- Elisabeth
- Elsbeth

Partial DATE Lexicon

(actual lexicon is a single list in alphabetic order)

MONTHS

- January –Jan –Januar -11br
- February –Feb –Februar -12br
- March –Mar –Marts
- April – Apr –Apl
- May –Mai
- June –Jun –Juni
- July –Jul –Juli -5br
- August –Aug –August -6br
- September –Sep –Sept -7br –Septembre
- October –Oct -8br –Octobre
- November –Nov -9br –Novembre
- December –Dec -10br -Decembre

TIME

- Year –yr –aar –år
- Month –mo –maaned –måned –m.
- Week –uge –ug.
- Day –dag –dg.
- Hour – h. –hr.

FEAST DATES (partial)

- **Easter – Paaske –Påske –Paasche –Påsche**
- Pentecost – Pent –Pinse -Pin
- Trinity –Tr –Trin –Trinitatis

DAYS OF WEEK

- Sunday –Dominico –Dom.
- Monday –Mondag –Mond.
- Tuesday –Tirsdag –Tirsd.
- Wednesday -Onsdag –Onsd.
- Thursday –Tørsdag –Tørstd.
- Friday –Fredag –Fred.
- Saturday –Lørsdag –Lørs.

FHL Film#052,236 Tvilum Parish

100

Web Page

- SOURCE URL -Tvilum Sogne Kirkebog
- [PAGE HEADER] Fødde 1751 3
- [BODY] Truust Dom. 23 p: Trinit: læst over Niels Baches SØREN fadd. Johannes Michelsens og Niels Mollers hustruer af Sødebyevad, Peder Rasmussen af Sødebyevad, Jens Bachis søn Peder og Niels Thylkes s. Peder af Truust

Ontology Entities

FIND and MARK UP relevant web pages by:

- NAME <NAME>
- DATE <DATE>
- PLACE <PLACE>
- RELATIONSHIP <RELATION>
- OCCUPATION <OCCUPATION>
- RECORD_TYPE <RTYPE>
- SOURCE <SOURCE>

Colors only represent OWL annotation mark-ups
automatically placed in the web page using the ontology

Annotated Web Page

- SOURCE -Tvilum Parish Register
- [PAGE HEADER] Fødde_1751_3
- [BODY] Truust Dom. 23 p: Trinit: læst over Niels Baches SØREN fadd. Johannes Michelsens og Niels Mollers hustruer af Søbeyvad, Peder Rasmussen af Søbeyvad, Jens Bachis søn Peder og Niels Thylkes s. Peder af Truust

Results Listing

TARGET – Jens Pedersen Bach

Truust, Tvilum Parish, Gjern District, Skanderborg

Date Range - born 1693 to died 1778

Name	Date	Place	Relation	Occupation	Record Type	Source (URL)
Jens Bachis	Dom. 23 p: Trinit: 1751 (14 Nov 1751)	Truust	fadd:		Fødde	Tvilum Parish Register

SOURCE -Tvilum Parish Register

[PAGE HEADER] Fødde 1751 3

[BODY] Truust Dom. 23 p: Trinit: læst over Niels Baches SØREN
fadd. Johannes Michelsens og Niels Mollers hustruer af Sødebyevad,
Peder Rasmussen af Sødebyevad, **Jens Bachis** søn Peder og
Niels Thylkes s. Peder af Truust

Conversion Functions inside the ontology

- Compute birthdate from age at death

Death – 22 Mar 1743

Age - 23 yr 2 m

-> BIRTH Jan 1720

- Compute dates from feast dates

Sunday 23rd after Trinity 1751

-> 14 Nov 1751

Solutions for Special Problems

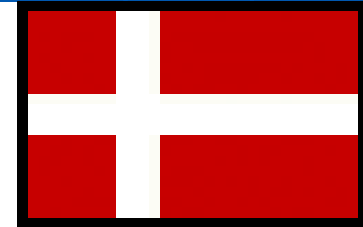
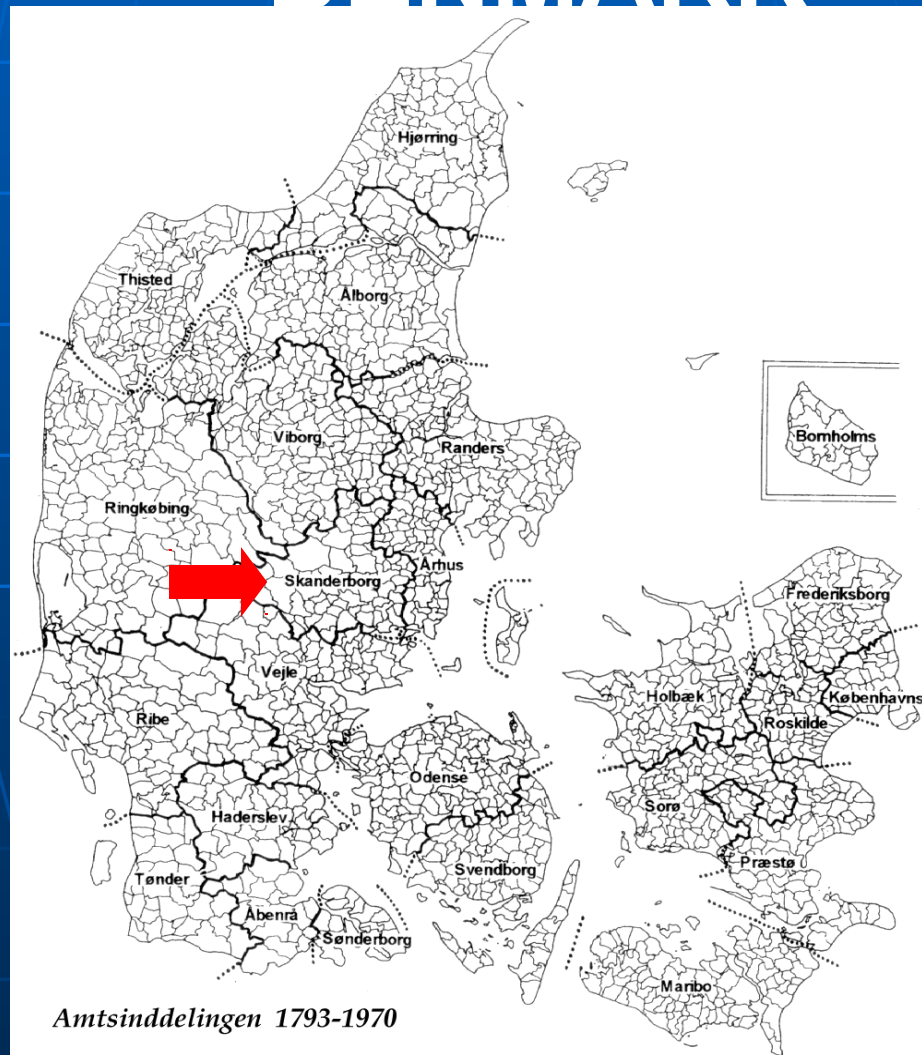
RULES FOR

- Matching different name forms
- Matching place names to appropriate records

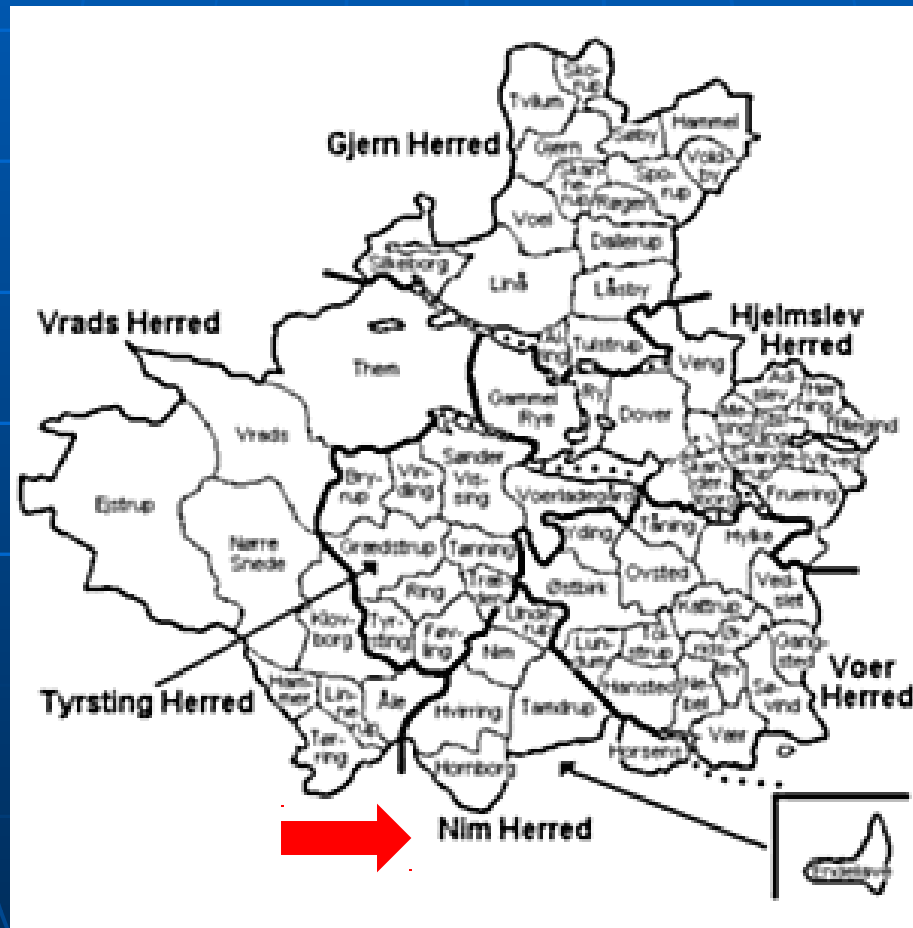
RULE - Match different name forms as ONE PERSON

- JENS PEDERSEN
- JENS PEDERSEN BACH
- JENS BACH
- JENS BACHIS

PLACES - County Map of DENMARK



Parish and District Map of **SKANDERBORG**



Road Map

www.expedia.com



Matching Places to Records

Farm name	Parish	District	County	Record Links
Molger	Tamdrup	Nim	Skanderborg	PARISH Tamdrup 1684-1912 PROBATE Nim Herred Provisti Rask Skanderborg Rytterdistrikt
	Tamdrup	Nim	Skanderborg	List of URL's Includes Molger URL's Adds Parish specific records
		Nim	Skanderborg	List of URL's Includes Tamdrup URL's Adds District specific records
			Skanderborg	List of URL's Includes all district URL's Adds County specific records

MAJOR CONTRIBUTIONS

- **First genealogical prototype for the semantic web**
 - [FOCUS on primary records](#)
 - [Not just an index of the records](#)
- **Practical demonstration of the superiority of the semantic web for research**
- **Portal for family history research that could be easily expanded:**
 - [Maps](#)
 - [Look-ups](#)
 - [Helps](#)
 - [Research training](#)
 - [Other countries and states](#)

QUESTIONS?